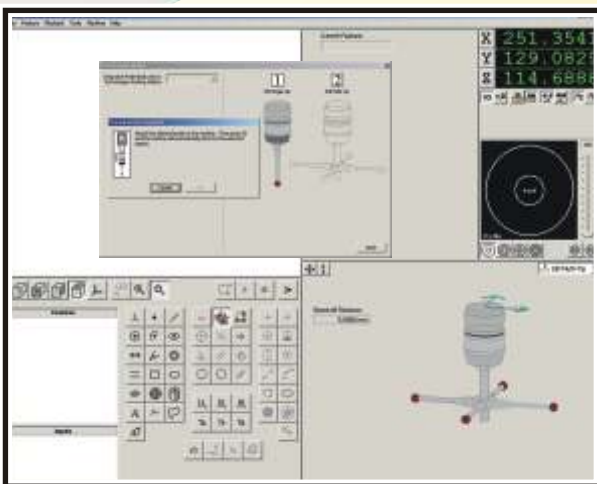


Touch Probe Kits

**Integrate Vision and Touch Measurements
Vertex and Excel Systems are Probe-Ready
Designed with Kinematic Fixture Mounts**



InSpec's Advanced Touch Probe Functions

Intuitive Probe Assembly Interface
Automated Docking in Multi-Port Probe Change Rack
Automated Probe Tip Qualification Including Lobing
Automated Z Scale and Perpendicularity Calibration
Automatic Approach Vectoring and Solution Iteration
Automatic Retract and Adjustable Standoff Distances
FREE InSpec 2.XX Updates - No Maintenance Fees

Touch Probe Kit Contents

RENISHAW TP20 Probe Body
RENISHAW TP20 Probe Modules (2 ea.)
M2 Five Way Stylus Center
M2 Stylus (5 ea. 3 mm x 20mm)
M2 Extensions (2 ea. 10 mm, 2 ea. 20 mm, & 1 ea. 30 mm)
Multi-Port Probe Change Rack (2 or 4 Port)
Module, Stylus, and Fixture Storage Box
Micro-Vu Offset Fixture & Reference Sphere Assembly
Instructions, Tools, Mounting Hardware, Cleaning Kit, & Case



Micro-Vu Corporation

7909 Conde Lane Windsor, CA 95492 USA
Phone 707 838 6272 Fax 707 838 3985

www.microvu.com

REGAL METROLOGY, INC.
MEASUREMENT SOLUTIONS

✦502-968-7993 ✦ISO/IEC 17025 Accredited ✦RegalMetrology.com

Factory authorized Sales, Service, Calibration, and Training serving Indiana, Kentucky, Tennessee, Alabama, Mississippi, and Illinois