

## SPECIFICATIONS

### PERFORMANCE

|                        |   |
|------------------------|---|
| X & Y Accuracy         | $U_x=2.5+L/25 \mu\text{m}$ , $U_y=2.5+L/15 \mu\text{m}$ |
| X & Y Perpendicularity | 12.5 $\mu\text{m}$ (0.0005")                            |
| Z Perpendicularity     | 7.5 $\mu\text{m}$ (0.0003")                             |
| Encoder Resolution     | 2.0 $\mu\text{m}$ (0.000080")                           |

### PHYSICAL

|                      |  |
|----------------------|--|
| Measuring Volume     | 300x150x75 mm (12"x6"x3")                        |
| Part Weight Capacity | 9 kg (20 lbs)                                    |
| Stage Surface        | 450x125 mm (18"x5") with Dovetail Slots          |
| Stage Material       | Steel with "Bright Nickel" Finish                |
| X & Y Ways           | Steel Balls and Rods                             |
| Bench Model          | 950x1075x1025 mm (38"x43"x41"), 114 kg (250 lbs) |
| Floor Model          | 950x1075x1775 mm (38"x43"x71"), 146 kg (325 lbs) |

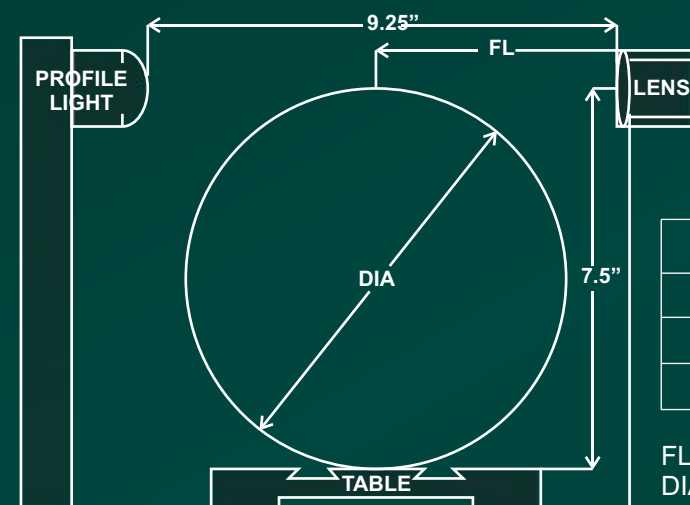
### FEATURES

|                |   |
|----------------|---|
| Image          | 14" Erect Image, Bright and Sharp                     |
| Profile Light  | Condensed 100W Halogen                                |
| Surface Light  | Through the Lens, 50W Halogen                         |
| Data System    | Q16 DRO or InSpec Metrology Software                  |
| Warranty       | One Year Parts and Labor                              |
| Lens Options   | 10x, 20x, 3 1/4x, 40x, 50x, Quick Change              |
| Screen Options | Crosshair, 1-Quad, 2-Quad, Tool, Thread, Micro-Radius |

### REQUIREMENTS

|             |                                   |
|-------------|-----------------------------------|
| Environment | 20°C $\pm$ 2°, 30-80% Humidity    |
| Power       | 110 VAC or 220 VAC, 50-60 Hz, 5 A |

NOTES: Width 43" with Q16, 20" without Q16. Computer required for InSpec.  
Specifications subject to change. Accuracy is in  $\mu\text{m}$ . L is length measured in mm.



| Mag | FL   | DIA   |
|-----|------|-------|
| 10x | 4.4" | 7.50" |
| 20x | 2.2" | 4.35" |
| 50x | 1.0" | 2.25" |

FL - Focal Length  
DIA - Maximum Part Diameter

## Spectra Accessories



### V-Block and Centers

- Set of Two
- 1.8" Radius Swing
- 2.0"x2.0"x1.3" Overall Size
- Steel Centers
- Aluminum V-Blocks

### Risers for V-Blocks

- Set of Two
- 3.8" Radius Swing
- 2.0"x1.8"x1.3" Overall Size
- Aluminum Risers



### Rotary Vise Fixture

- 360° Continuous Rotation
- 1.5"x1.5" Steel Jaw Vice
- 4.0"x4.0"x1.5" Overall Size
- Aluminum Base



### Helix Fixture

- 20° Swivel Angle
- 12.5"x2.5"x1.0" Overall Size
- Aluminum Construction
- Shown with V-Blocks & Centers



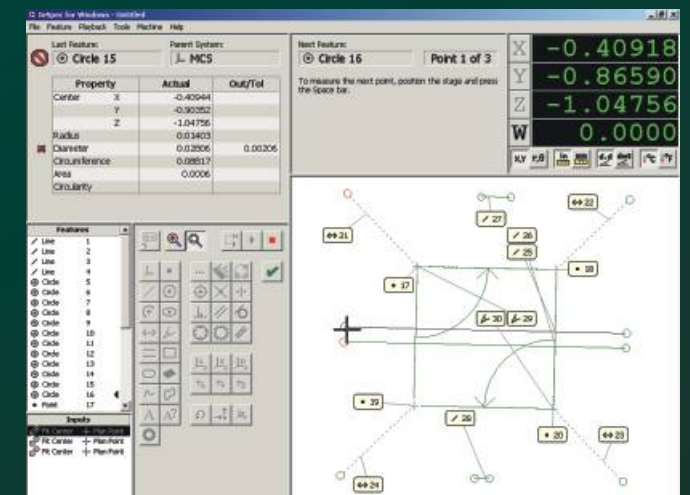
Large Capacity Measuring Stage

Quick Change 10x to 50x Lenses

Bench and Floor Models

Bright 14" Screen

Sharp, Erect Image



Available with InSpec Metrology Software



**Micro-Vu Corporation**

7909 Conde Lane Windsor, CA 95492 USA  
Phone 707 838 6272 Fax 707 838 3985

[www.microvu.com](http://www.microvu.com)

**REGAL METROLOGY, INC.**  
MEASUREMENT SOLUTIONS

\*502-968-7993 \*ISO/IEC 17025 Accredited \*www.RegalMetrology.com  
Factory authorized Sales, Service, Calibration, and Training  
Serving Indiana, Kentucky, Tennessee, Alabama, Mississippi, and Illinois

**MICRO-VU CORPORATION**  
PRECISION MEASUREMENT SYSTEMS



The Spectra Optical Comparators offer a large capacity stage for dimensional and profile measurements. The horizontal double-mirror design produces images that are sharp and erect. Bench and floor models are offered for shop floor environments.

- **Large Precision Stage**  
300x150x75 mm (12"x6"x3") Travel  
450x125 mm (18"x5") Stage Area

- **Long Focal Length Lenses**  
Accommodate Large Parts

- **Precision Linear Encoders**  
2.0  $\mu$ m (0.000080") Resolution

- **Erect 14" Diameter Image**

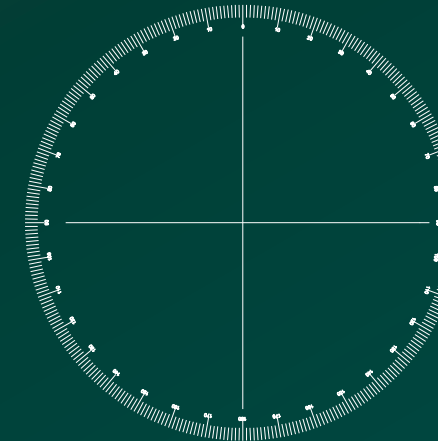
- **Rotatable Glass Screens**

- **1 Minute Electronic Protractor**

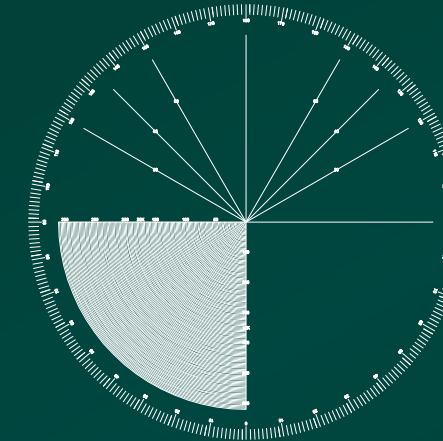
- **Thru-The-Lens Surface Illumination**  
Produces Bright Images

- **Collimated, High Intensity Profile Light**  
Ensures Sharp Image

- **Optional ED-50 Edge Detector**

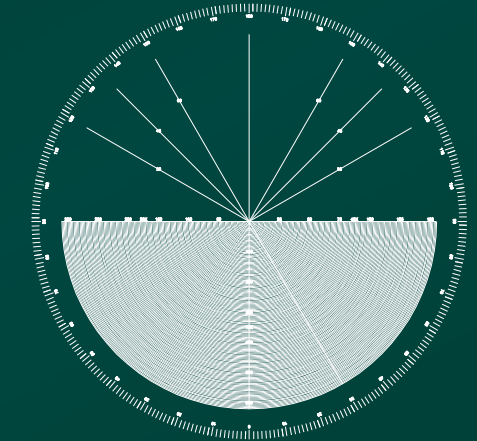


**Plain Crosshair**



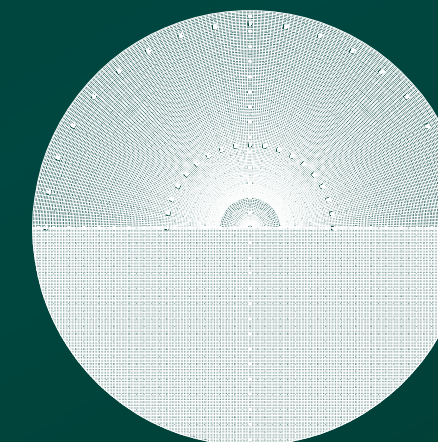
**One-Quadrant Protractor**

INCH OR METRIC  
MAGNIFICATIONS: 10X 20X 40X  
INCH SCREEN: 0.004" 0.002" 0.001"  
METRIC SCREEN: 0.20MM 0.10MM 0.02MM  
ALL MAGNIFICATIONS ON ONE CHART



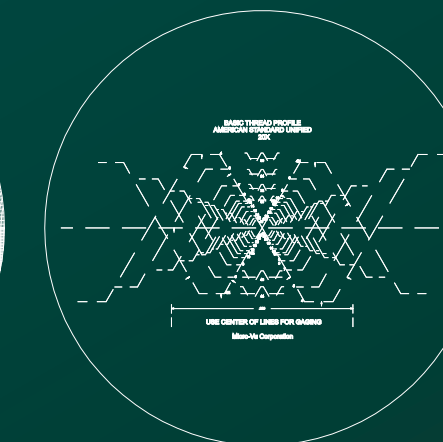
**Two-Quadrant Protractor**

INCH ONLY  
MAGNIFICATIONS: 10X 20X 40X  
INCH SCREEN: 0.004" 0.002" 0.001"  
ALL MAGNIFICATIONS ON ONE CHART



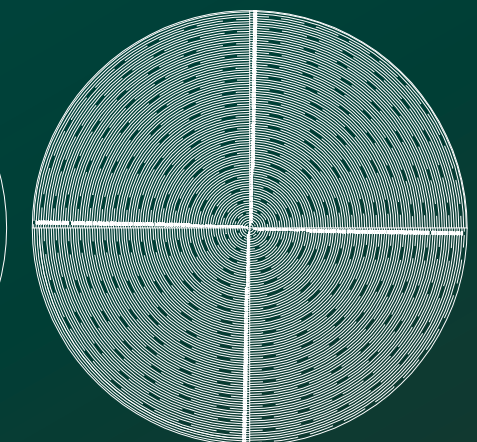
**Tool Room Chart**

INCH OR METRIC  
MAGNIFICATIONS: 10X 20X 40X  
INCH SCREEN: 0.004" 0.002" 0.001"  
METRIC SCREEN: 0.20MM 0.10MM 0.02MM  
ALL MAGNIFICATIONS ON ONE CHART



**Thread Chart**

INCH OR METRIC  
MAGNIFICATIONS: 10X 20X 40X  
INCH SCREEN: 0.004" 0.002" 0.001"  
METRIC SCREEN: 0.20MM 0.10MM 0.02MM  
ALL MAGNIFICATIONS ON ONE CHART



**Micro-Radius Chart**

INCH ONLY  
MAGNIFICATIONS: 10X 20X 40X  
INCH SCREEN: 0.004" 0.002" 0.001"  
ALL MAGNIFICATIONS ON ONE CHART

**InSpec Metrology Software**  
Powerful Yet Easy-to-Use  
Point and Click Programming  
Easy GD&T Tolerancing  
Automated Reporting

