

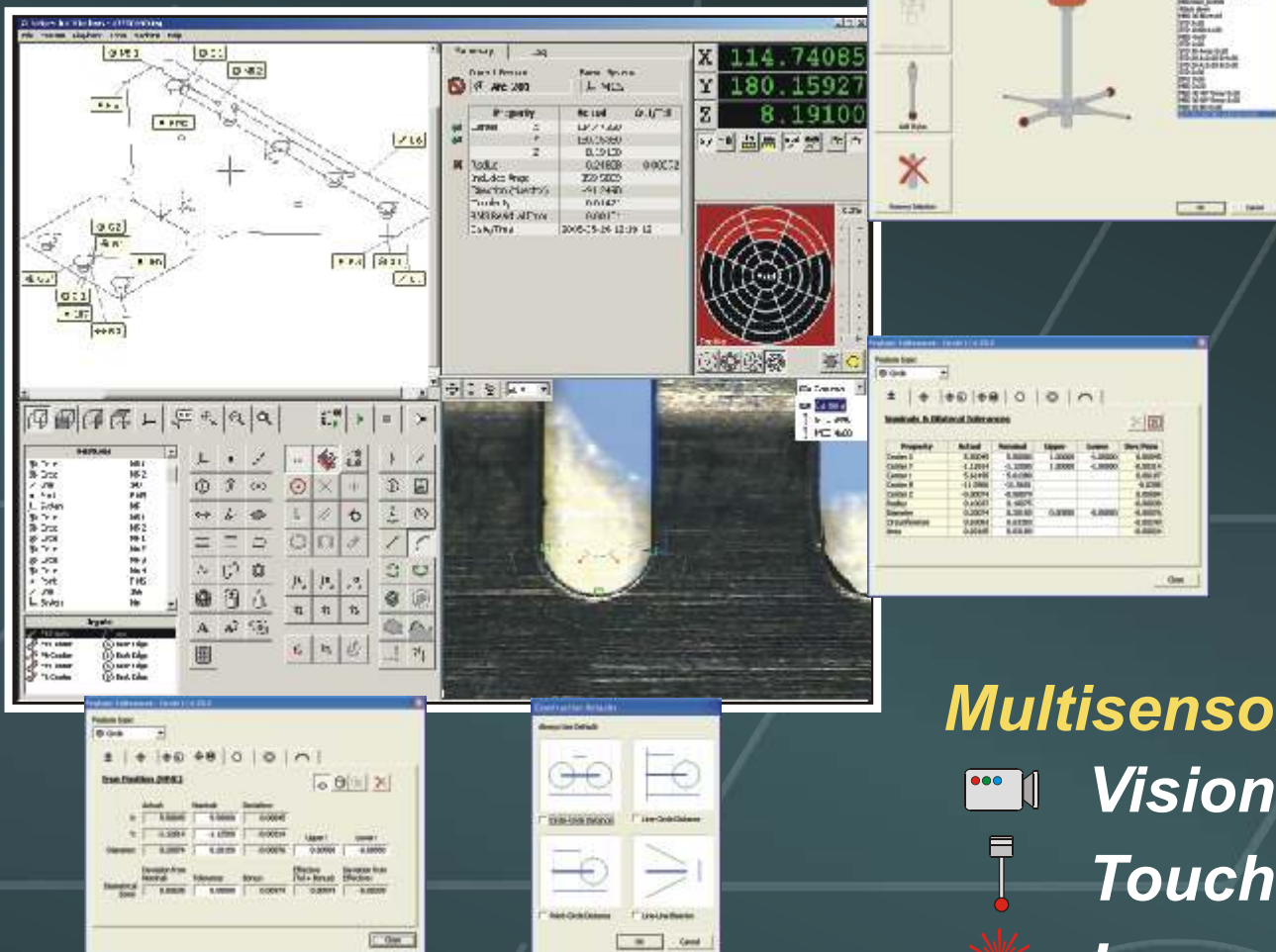


# InSpec METROLOGY SOFTWARE

## Powerful and Intuitive

- ⊕ Measure
- ⊕ Construct
- ⊕ Tolerance
- ⊕ Report

Centrally located icons, a fixed window display, and point-and-click "programming" improve productivity.



## Multisensor



Vision



Touch



Laser

# MICRO-VU CORPORATION

PRECISION MEASUREMENT SYSTEMS SINCE 1959



# InSpec METROLOGY SOFTWARE

### Simple User Interface:

- Camera Window
- Feature Summary & Log
- Part Schematic
- Program List and Icons

### Powerful Image Tools:

- Manual Point
- Focus Point
- Best Edge
- First Edge
- Closest Edge
- Line Scan
- Arc Scan
- Circle Scan
- Ellipse Scan
- Profile Circle
- Closed Profile
- Open Follower
- Closed Follower
- O-Ring Tool
- Through-Point

### Feature Types:

- Point
- Line
- Arc
- Circle
- Angle
- Distance
- Plane
- System
- Ellipse
- Gap
- Rectangle
- Slot
- Open Spline
- Closed Spline
- O-Ring
- Sphere
- Cylinder
- Cone
- Composite
- Calculator
- Text
- Prompt
- Part Separator

### Constructions:

- Auto Construct
- Intersection
- Perpendicular
- Parallel
- Bisect
- Centered
- Fit Points
- Circumscribe
- Inscribe
- Form Fit
- Off-Set
- Store/Recall

### Pin Up Dialogs:

- Feature Tolerancing
- Multi-Feature Tolerances
- Feature Exports
- Multi-Feature Exports

### Feature Properties:

- Cartesian (XYZ) Position,
- Polar (RThetaZ) Position,
- Radius, Included Angle,
- Diameter, Concentricity,
- True Position RFS, MMC, LMC
- Composite True Position,
- Pitch, Skew, Roll,
- Vertex, Angle, Direction,
- Length, Width, Height,
- Maximum and Minimum Width,
- Major and Minor Axis,
- Straightness, Circularity,
- Flatness, Sphericity,
- Cylindricity, Conicity,
- ID, OD, Thickness,
- Line Profile, Surface Profile,
- Area, Volume, Perimeter,
- Path Length, Circumference,
- Perpendicularity, Parallelism,
- Angularity, Form of Fit,
- Date / Time
- and more

### Feature Functions:

- Remeasure
- Export
- Tolerance
- Delete
- Rename
- Translate
- Rotate
- Mirror
- Set System
- Edit Text
- Edit Solution
- Edit Inputs
- Edit Lights
- Edit Zoom

### User Levels:

- Configurable User Accounts
- Administrator, Programmer,
- Operator, & Custom Levels
- Part Program Protection
- System Calibration Protection

### Automated Calibrations:

- Non-Linear Stage Correction
- Stage Verification
- Optics Calibration
- Zoom Calibration
- Lights Calibration
- Rotary Calibration
- Probe Calibration
- Perpendicularity Calibration

### Temperature Compensation:

- Expansion Coefficient List

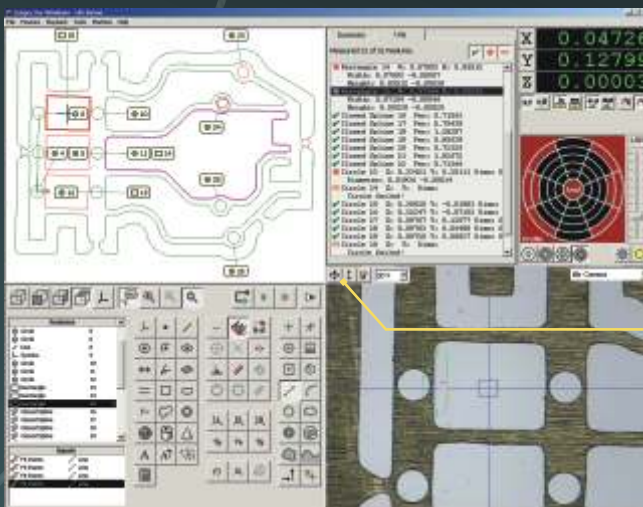
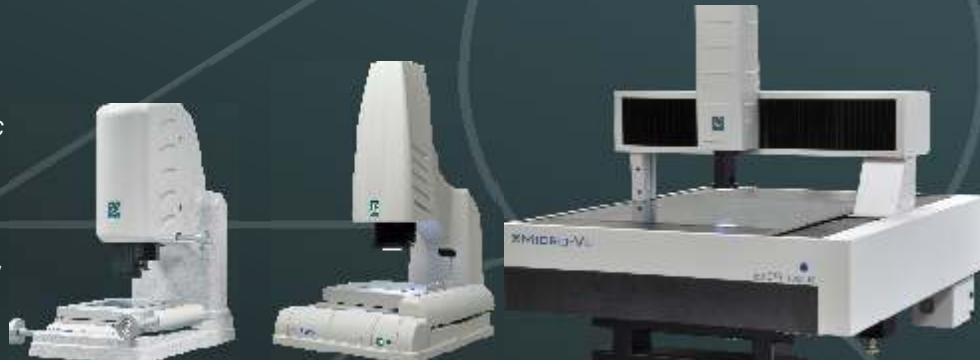
### Data Import / Export:

- DXF Import and Export
- 2D & 3D Data Point Export
- Other Importers Available
- Gerber, Excellon, & IGES
- Auto-Export to File, Serial
- Port, Printer, & ODBC

Sol Models

Vertex Models

Excel Models



Calibrated Illumination Control

On Screen Stage Controls (For Automated Systems)

### Touch Probe:

- Intuitive Interface
- Automated Docking
- Automated Tip Qualification
- Including Lobing
- Automated Z Scale and XZ/YZ Calibration
- Dynamic Approach Vectors and Solution Iteration
- Automatic Retract
- Adjustable Standoff
- Distance
- Standard Probe Naming

### Rotary Indexer:

- W Axis Part Rotation
- Automated Calibration

### Laser Probes:

- Fast Z Measurements
- Surfaces or Points

### InSpec 2.XX Updates:

- Free Software Updates
- No Maintenance Fees

InSpec Metrology Software drives the advanced staging, electronics, imaging, and lighting resulting in high accuracy measurement systems.

InSpec makes it easy to measure parts, check geometric tolerances, collect measurement data, and generate reports.

InSpec has advanced focus and edge detection algorithms that provide superior performance with sub-pixel accuracy and repeatability.

Maximize productivity and minimize operator training with InSpec Metrology Software. The concise screen layout presents the part program, measurement data, the video image, and a schematic on a single screen. Spend more time measuring parts and less time navigating software.



## Micro-Vu Corporation

7909 Conde Lane Windsor, CA 95492 USA  
Phone 707 838 6272 Fax 707 838 3985

[www.microvu.com](http://www.microvu.com)

## REGAL METROLOGY, INC.

MEASUREMENT SOLUTIONS

\*502-968-7993 \*ISO/IEC 17025 Accredited \*www.RegalMetrology.com

Factory authorized Sales, Service, Calibration, and Training

Serving Indiana, Kentucky, Tennessee, Alabama, Mississippi, and Illinois